

- PLUMBING PLAN KEYED NOTES:**
- 3/4" CW DOWN IN WALL TO SINKS, PROVIDE AREA SHUT OFF VALVE ABOVE CEILING, TYPICAL.
 - 1-1/2" CW DOWN IN WALL TO PLUMBING FIXTURES WITH AREA SHUT OFF VALVE ABOVE CEILING, TYPICAL.
 - 1" CW & 1/2" DOWN IN WALL TO PLUMBING FIXTURES WITH AREA SHUT OFF VALVE ABOVE CEILING, TYPICAL.
 - 3/4" CW BRANCH DOWN TO DRINKING FOUNTAINS, ROUTE 3/4" UP LEVEL ABOVE AND 3/4" CW DOWN. PROVIDE AREA SHUT OFF VALVE FOR EACH LEVEL.
 - 4" SANITARY STUB OUT; REFER TO CIVIL DRAWINGS FOR CONTINUATION.
 - 6" SANITARY STUB OUT; REFER TO CIVIL DRAWINGS FOR CONTINUATION.
 - 4" GREASE WASTE STUB OUT TO GREASE INTERCEPTOR; REFER TO CIVIL DRAWINGS FOR EXACT LOCATION.
 - 4" SANITARY RISER DOWN FROM LEVEL ABOVE.
 - 1" CW RISER UP TO LEVEL ABOVE, PROVIDE AREA SHUT OFF VALVE AND ACCESS PANEL IN ROOM ABOVE.
 - 3/4" CW UP TO LEVEL ABOVE.
 - 3" CW BRANCH, ROUTE 2-1/2" CW UP AND 2-1/2" CW DOWN IN PLUMBING CHASE. PROVIDE AREA SHUT OFF VALVE IN BOTH LEVELS.
 - 1" GAS LINE UP TO SCIENCE CLASSROOM IN LEVEL ABOVE.
 - 2" WASTE DOWN FROM LEVEL ABOVE.
 - 2" ACID WASTE DOWN FROM LEVEL ABOVE.

GENERAL PLUMBING PLAN NOTES:

1. PLUMBING CONTRACTOR SHALL COORDINATE ALL WASTE PIPING ROUTING BELOW FLOOR WITH STRUCTURAL ENGINEER AND WORK OUT ANY CONFLICTS PRIOR TO ANY WORK.

- 4" ACID WASTE DOWN FROM LEVEL ABOVE.
- 4" ACID WASTE RISER DOWN FROM LEVEL ABOVE.
- (2) GREASE INTERCEPTOR VENTS UP, COMBINE VENT TOGETHER 6" ABOVE GREASE INTERCEPTOR MANHOLE LEVEL.
- 1" CW DOWN TO PLUMBING FIXTURES WITH AREA SHUT OFF VALVE ABOVE CEILING.
- 1/2" HW UP TO LEVEL ABOVE; REFER TO SHEET P2-1 FOP CONTINUATION.
- 1/2" H & CW TO LEVEL ABOVE, 2" SANITARY SEWER DOWN; REFER TO SHEET P2-1 FOP CONTINUATION.
- 4" DOMESTIC WATER BUILDING SUPPLY; REFER TO CIVIL DRAWINGS FOR CONTINUATION.
- ESTIMATED 6" FIRE SPRINKLER LINE TO BUILDING; REFER TO CIVIL DRAWINGS FOR CONTINUATION.
- MEDIUM PRESSURE LINE TO GAS METER; CONTRACTOR TO COORDINATE WITH GAS SUPPLIER POINT OF CONNECTION REQUIREMENT AND METER LOCATION PRIOR TO ANY WORK.
- 1/2" CW DOWN IN WALL TO SINK.
- 1" CW DOWN IN WALL TO PLUMBING FIXTURES WITH AREA SHUT OFF VALVE ABOVE CEILING, TYPICAL.

PLAN REVIEWER NOTES:

1. THIS BUILDING IS TO BE PROVIDED WITH COMPLETE FIRE SPRINKLER SYSTEM; THE CONTRACTOR IS RESPONSIBLE FOR HIRING A FIRE SPRINKLER ENGINEER TO DESIGN THE FIRE PROTECTION. THE FIRE SPRINKLER LINE SHOWN ON PLANS IS FOR COORDINATION ONLY.

1 FIRST FLOOR PLAN - PLUMBING
SCALE: 1/8" = 1'-0"

hatch+ulland owen
architects

702 San Antonio Street
Austin, Texas 78701
T: 512.474.8548
F: 512.474.8643
www.huaoarchitects.com

CIVIL ENGINEER:
TEXAS DESIGN INTERESTS
6001 W. WILLIAM CANNON
AUSTIN, TX 78749
512-301-3389

STRUCTURAL ENGINEER:
TEXAS DESIGN INTERESTS
6001 W. WILLIAM CANNON
AUSTIN, TX 78749
512-301-3389

MECHANICAL, ELECTRICAL & PLUMBING ENGINEERS:
AYS ENGINEERING, LLC
595 Round Rock West Dr.
ROUND ROCK, TX 78681
512-961-6835

LANDSCAPE ARCHITECT:

HOUSTON GATEWAY ACADEMY INC

BOWIE CAMPUS

7310 BOWIE ST
HOUSTON, TX 77012

CITY OF HOUSTON
PROJECT # 09044674

NOTE: This document, the ideas and designs contained herein are the sole property of the architect. These documents are not to be used or altered in whole or in part for other than the original intended use, nor are they to be assigned to any third party without the written consent of the architect.

NOTE: By act of submitting a bid for the proposed contract, the bidder warrants that the bidder, and all subcontractors and material suppliers, have been duly licensed and properly bonded for the work to be performed and that all construction documents and specifications have been read and understood and that the bidder has accepted and agreed to be bound by all conditions, specifications and standards herein and to all applicable codes and ordinances.

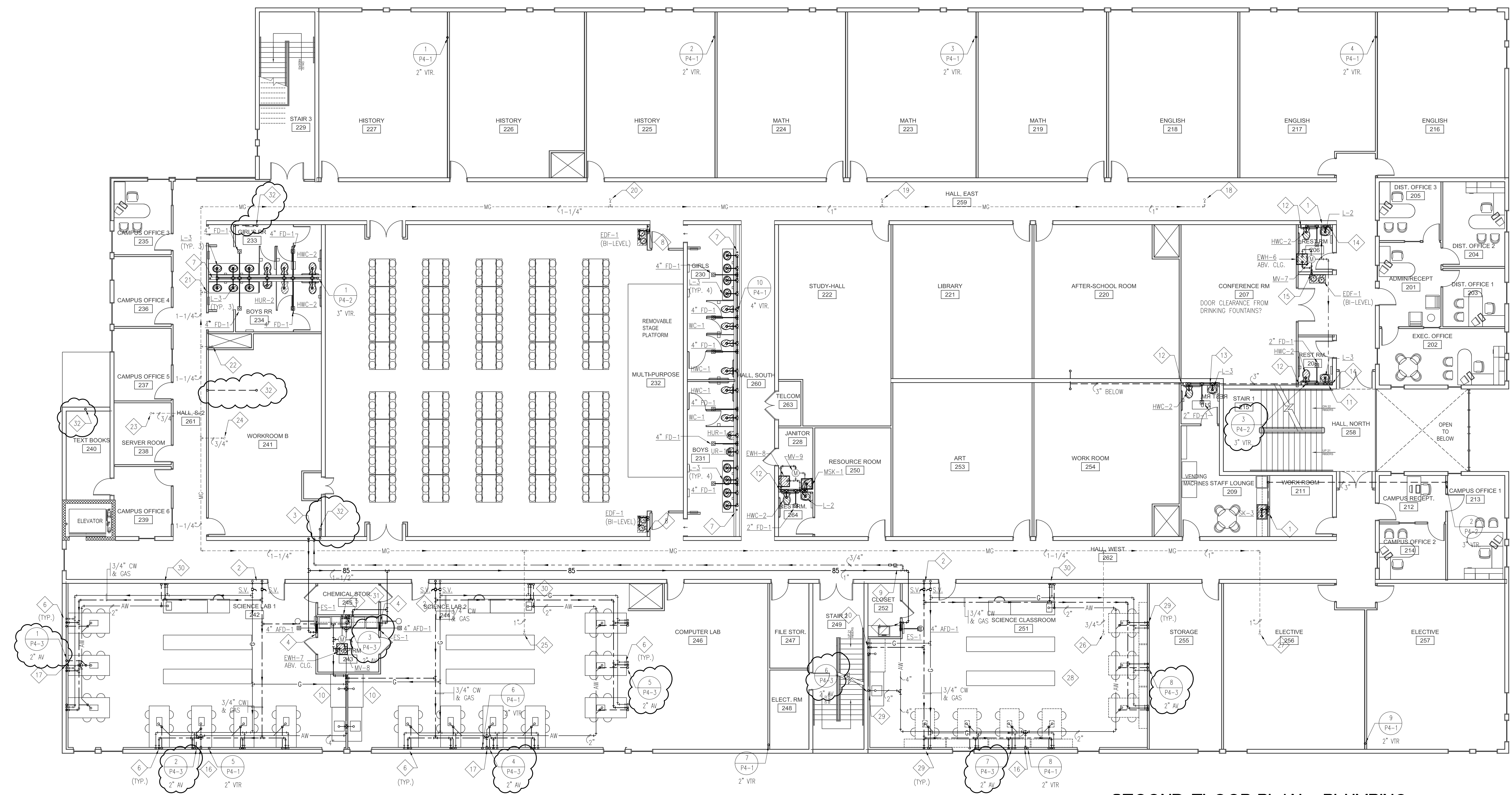
PROJECT MGR:
DRAWN BY: AYS
CHKD. BY: AYS

ISSUE DATES:

date	issue
06.5.09	Permit Set
08.21.09	COH REVIEW 1
10.30.09	COH REVIEW 2

FIRST FLOOR PLAN - PLUMBING

P2-0



PLUMBING PLAN KEYED NOTES:

- 1/2" H & CW UP FROM LEVEL BELOW.
- 1" CW & GAS UP FROM BELOW UP TO CEILING ABOVE, PROVIDE ASCO SOLENOID VALVE AND CONNECT TO PANIC BUTTON
- 1-1/2" TEPID UP & 3/4" HWR (TEPID) DOWN.
- 1" TEPID DOWN TO COMBINATION EMERGENCY EQUIPMENT.
- 1/2" H & CW DOWN TO LAB SINK.
- 1/2" CW & GAS DOWN TO LAB SINK, TYPICAL.
- 2" CW UP FROM LEVEL BELOW, PROVIDE AREA SHUT OFF VALVE IN ACCESS PANEL.
- 1/2" CW AND 2" VENT UP, 2" WASTE DOWN.
- HOT WATER RETURN LINE WITH CHECK AND BALANCING VALVE.
- 3/4" CW & GAS DOWN TO FUME HOOD, ROUTE 1/2" & CW GAS TO STUDENT LAB SINK.
- 1/2" HW DOWN.
- 1" CW UP FROM LEVEL BELOW WITH ACCESS PANEL ON THIS LEVEL.
- 1/2" HW UP FROM LEVEL BELOW.
- 4" SANITARY SEWER RISER DOWN; REFER TO SHEET 2.0 FOR CONTINUATION.
- 3/4" CW UP, WITH CW BRANCH TO DRINKING FOUNTAIN AND UP TO WATER HEATER.
- 4" ACID WASTE RISER DOWN; REFER TO SHEET P2.0 FOR CONTINUATION.
- 2" ACID WASTE RISER DOWN; REFER TO SHEET P2.0 FOR CONTINUATION.
- 1" MED. GAS LINE UP TO GAS PRESSURE REGULATOR (GPR-8), REFER TO SHEET P2-3 FOR CONTINUATION.
- 3/4" MED. GAS LINE UP TO GAS PRESSURE REGULATOR (GPR-7), REFER TO SHEET P2-3 FOR CONTINUATION.
- 1" MED. GAS LINE UP TO GAS PRESSURE REGULATOR (GPR-6), REFER TO SHEET P2-3 FOR CONTINUATION.
- 3/4" MED. GAS LINE UP TO GAS PRESSURE REGULATOR (GPR-5), REFER TO SHEET P2-3 FOR CONTINUATION.
- 1-1/2" MED. GAS LINE UP FROM LEVEL BELOW, REFER TO SHEET P2-2 FOR CONTINUATION.
- 3/4" MED. GAS LINE UP TO GAS PRESSURE REGULATOR (GPR-3), REFER TO SHEET P2-3 FOR CONTINUATION.
- 3/4" MED. GAS LINE UP TO GAS PRESSURE REGULATOR (GPR-4), REFER TO SHEET P2-3 FOR CONTINUATION.
- 1" MED. GAS LINE UP TO GAS PRESSURE REGULATOR (GPR-9), REFER TO SHEET P2-3 FOR CONTINUATION.
- 3/4" MED. GAS LINE UP TO GAS PRESSURE REGULATOR (GPR-10), REFER TO SHEET P2-3 FOR CONTINUATION.
- 1" MED. GAS LINE UP TO GAS PRESSURE REGULATOR (GPR-11), REFER TO SHEET P2-3 FOR CONTINUATION.
- ALL ACID WASTE & VENT, COLD & TEPID WATER AND GAS PIPING IN THIS ROOM IS FOR FUTURE. ROUGH IN FOR SINKS, FUME HOOD AND EMERGENCY EQUIPMENT FOR FUTURE.
- ROUGH IN AND INSTALL CW & GAS FOR FUTURE FUME HOOD / STUDENT LAB SINKS.
- 1/2" GAS & CW DOWN BELOW FLOOR TO TEACHER LAB TABLE. COORDINATE WITH SCIENCE LAB SUPPLIER FOR ROUGH-IN PRIOR TO ANY WORK.

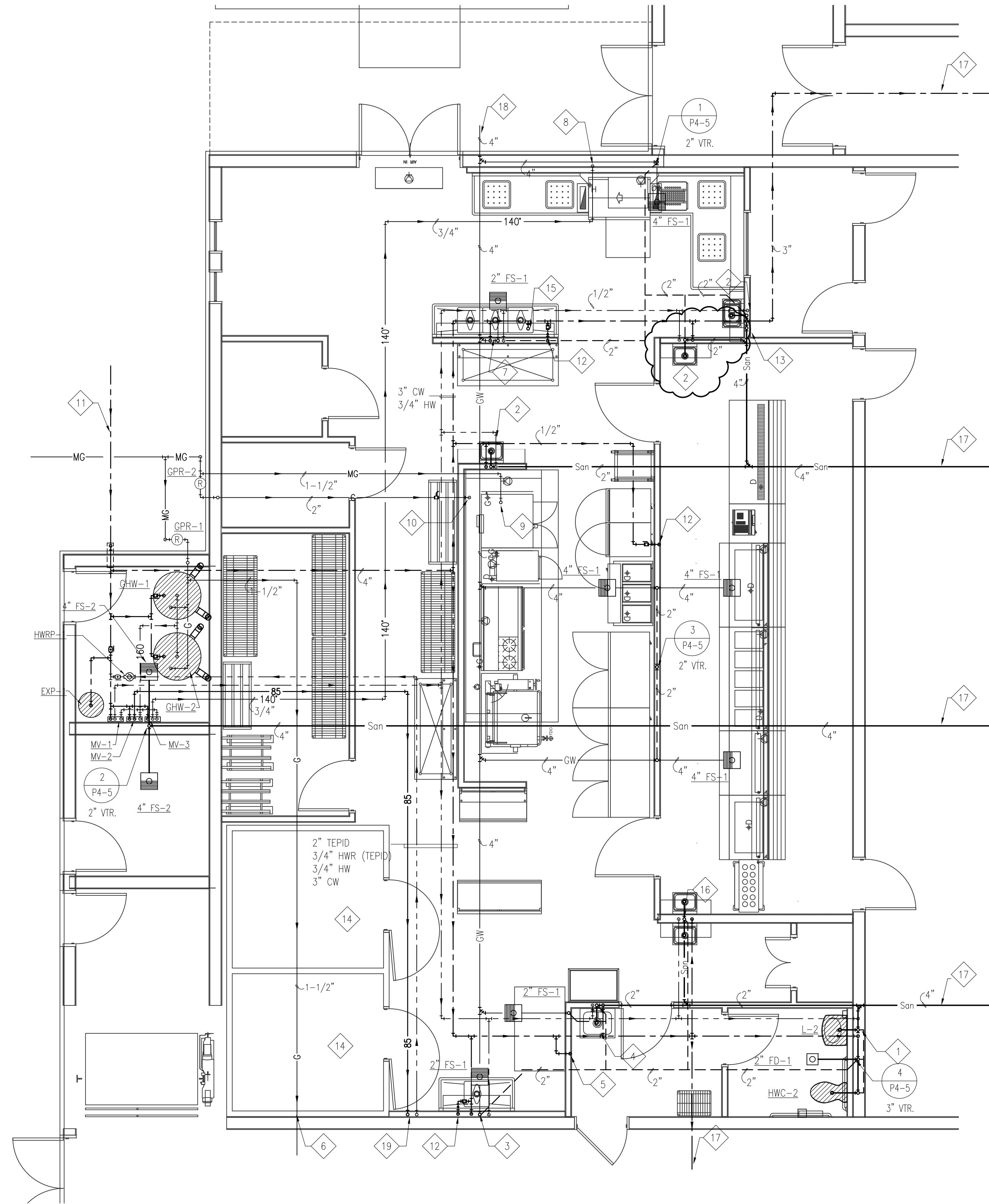
1/2" TEPID WATER DOWN TO COUNTER MOUNTED EYE/FACE WASH (EF-1)

GREASE VENT RISER UP, REFER TO SHEET P2-2 FOR CONTINUATION. OFFSET BELOW AND RISE UP TO ROOF

1 SECOND FLOOR PLAN - PLUMBING
SCALE: 1/8" = 1'-0"

GENERAL PLUMBING PLAN NOTES:

1. PLUMBING CONTRACTOR SHALL COORDINATE WITH THERMO-BLOCK AND ARCHITECT WITH ALL PIPE WALL PENETRATIONS PRIOR TO ANY WORK.



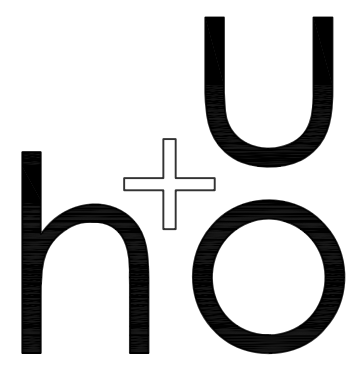
PLUMBING PLAN KEYED NOTES:

- 1 1/2" HW & 1" CW DOWN IN PLUMBING CHASE TO PLUMBING FIXTURES WITH AREA SHUT OFF VALVE ABOVE CEILING.
- 2 1/2" H & CW DOWN TO HAND SINK.
- 3 3/4" H & CW DOWN TO (1) COMPARTMENT SINK, ROUTE WASTE INDIRECT TO FLOOR SINK. PROVIDE AIRGAP.
- 4 3/4" H & CW DOWN TO MOP SINK.
- 5 1/2" CW DOWN TO ICE MAKER WITH RP2 BACKFLOW PREVENTER, REFER TO DETAIL.
- 6 1-1/2" GAS LINE TO SCIENCE LABS, REFER TO SHEET P2-0 FOR CONTINUATION.
- 7 3/4" H & CW DOWN TO (3) COMPARTMENT SINK, ROUTE WASTE INDIRECT TO FLOOR SINK. PROVIDE AIRGAP.
- 8 3/4" HW (140") DOWN TO BOOSTER HEATER, ROUTE DISHWASHER WASTE INDIRECT TO FLOOR SINK. PROVIDE AIR GAP.
- 9 1-1/2" MEDIUM GAS LINE UP TO LEVEL ABOVE; REFER TO SHEET P2-1 FOR CONTINUATION.
- 10 2" GAS HEADER DOWN TO KITCHEN EQUIPMENT WITH SOLENOID VALVE. CONNECT TO KITCHEN EMERGENCY SHUTOFF SYSTEM.
- 11 4" WATER SERVICE LINE; REFER TO CIVIL DRAWINGS FOR CONTINUATION.
- 12 1/2" CW TO TRAP PRIMER WITH SHUT OFF VALVE. PROVIDE DISTRIBUTION UNIT WHEN SERVING MULTIPLE DRAINS.
- 13 4" SANITARY SEWER RISER DOWN FROM GANG RESTROOM ON LEVEL ABOVE.
- 14 ROUTE WALK-IN COOLER / FREEZER CONDENSATE LINE INDIRECT TO FLOOR SINK.
- 15 2" CW UP TO RESTROOM ON LEVEL ABOVE.
- 16 3/4" H & CW DOWN TO HAND SINKS.
- 17 REFER TO SHEET P2.0 FOR CONTINUATION.
- 18 4" GREASE WASTE LINE TO GREASE INTERCEPTOR; REFER TO CIVIL DRAWINGS FOR CONTINUATION.
- 19 2" TEPID WATER & 3/4" HWR (TEPID) UP TO LEVEL ABOVE. REFER TO SHEET P2.1 FOR CONTINUATION.



1 ENLARGED KITCHEN PLAN - PLUMBING

SCALE: 1/4" = 1'-0"



hatch+ulland owen
architects

702 San Antonio Street
Austin, Texas 78701
T: 512.474.8548
F: 512.474.8643

www.huorchitects.com

CIVIL ENGINEER:
TEXAS DESIGN INTERESTS
6001 W. WILLIAM CANNON
AUSTIN, TX 78749
512-301-3389

STRUCTURAL ENGINEER:
TEXAS DESIGN INTERESTS
6001 W. WILLIAM CANNON
AUSTIN, TX 78749
512-301-3389

**MECHANICAL, ELECTRICAL &
PLUMBING ENGINEERS:**
AYS ENGINEERING, LLC
595 Round Rock West Dr.
ROUND ROCK, TX 78661
512-961-6835

LANDSCAPE ARCHITECT:

**HOUSTON
GATEWAY
ACADEMY
INC**

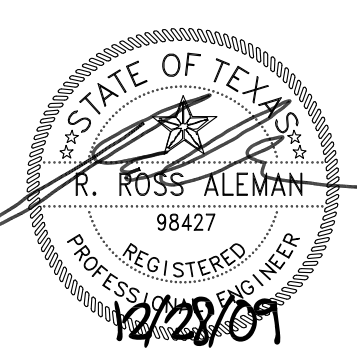
**BOWIE
CAMPUS**

7310 BOWIE ST
HOUSTON, TX 77012

CITY OF HOUSTON
PROJECT # 09044674

NOTE: This document, the ideas and design
concepts contained herein are the sole and
exclusive property of the architect. These documents
are not to be used in any other project or
for other than the original intended use, nor are
they to be reproduced in any form without
written permission from the architect.

NOTE: By act of advertising a bid for the
proposed contract, the bidder warrants that the
bidder, and all subcontractors and vendors,
have thoroughly reviewed the drawings and
specifications and other contract documents
and have found them complete and free from any
errata and subject to the contract
inherent. The bidder further warrants that to the
best of their knowledge and belief, no
errata or omissions have been identified and
notified or indicated herein are acceptable for all
applicable codes and authorities.

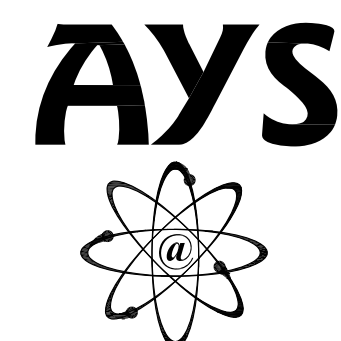


PROJECT MGR:

DRAWN BY: AYS
CHKD. BY: AYS

ISSUE DATES:

date	issue
06.5.09	Permit Set
08.21.09	COH REVIEW 1
10.30.09	COH REVIEW 2



AYS
Engineering, LLC
MKT CONSULTING ENGINEERING
595 Round Rock West Dr., Unit 101 - Round Rock - TX 78661
www.AYSEng.com 512-961-6835

KITCHEN PLAN
PLUMBING

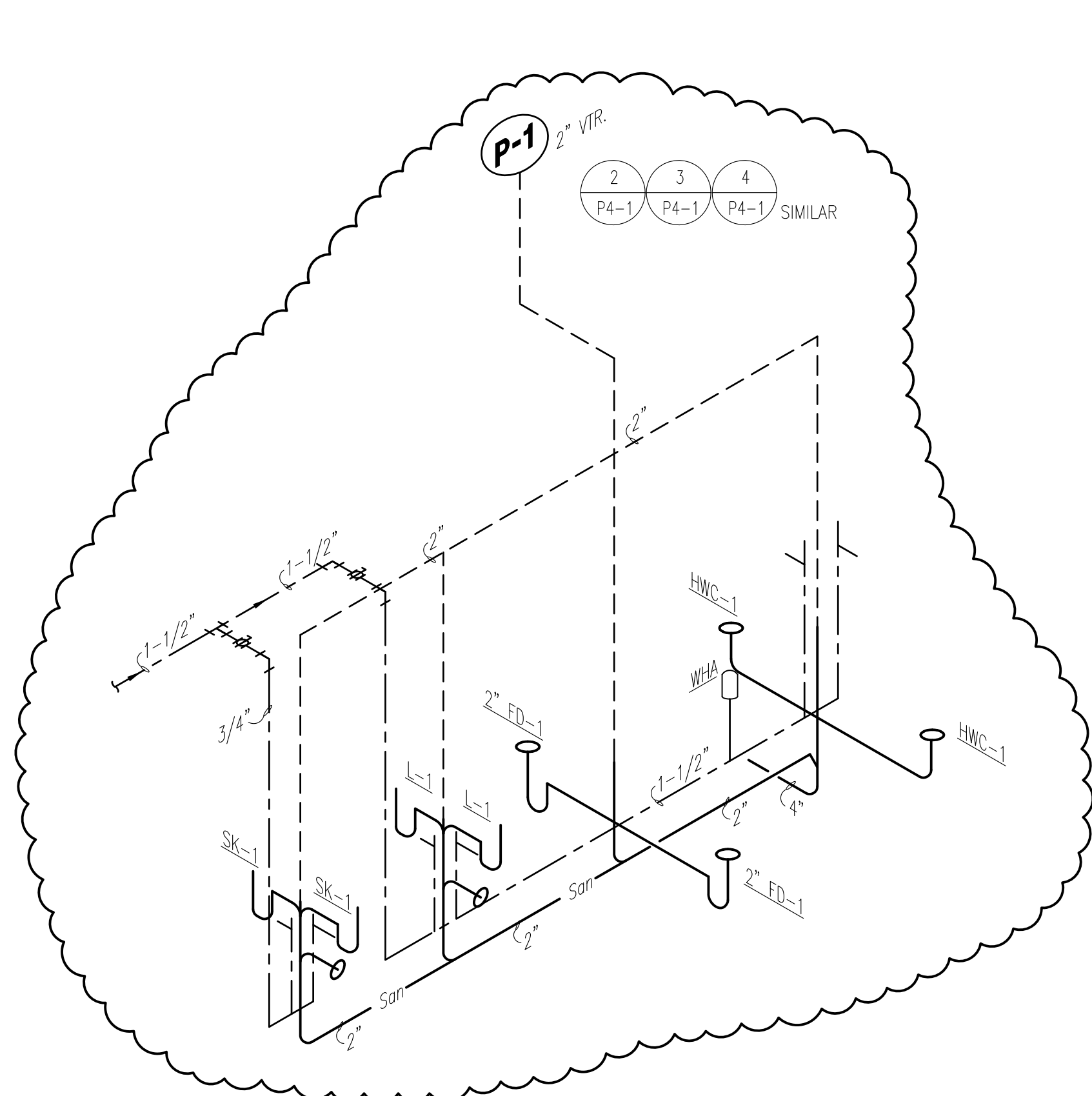
P2-2

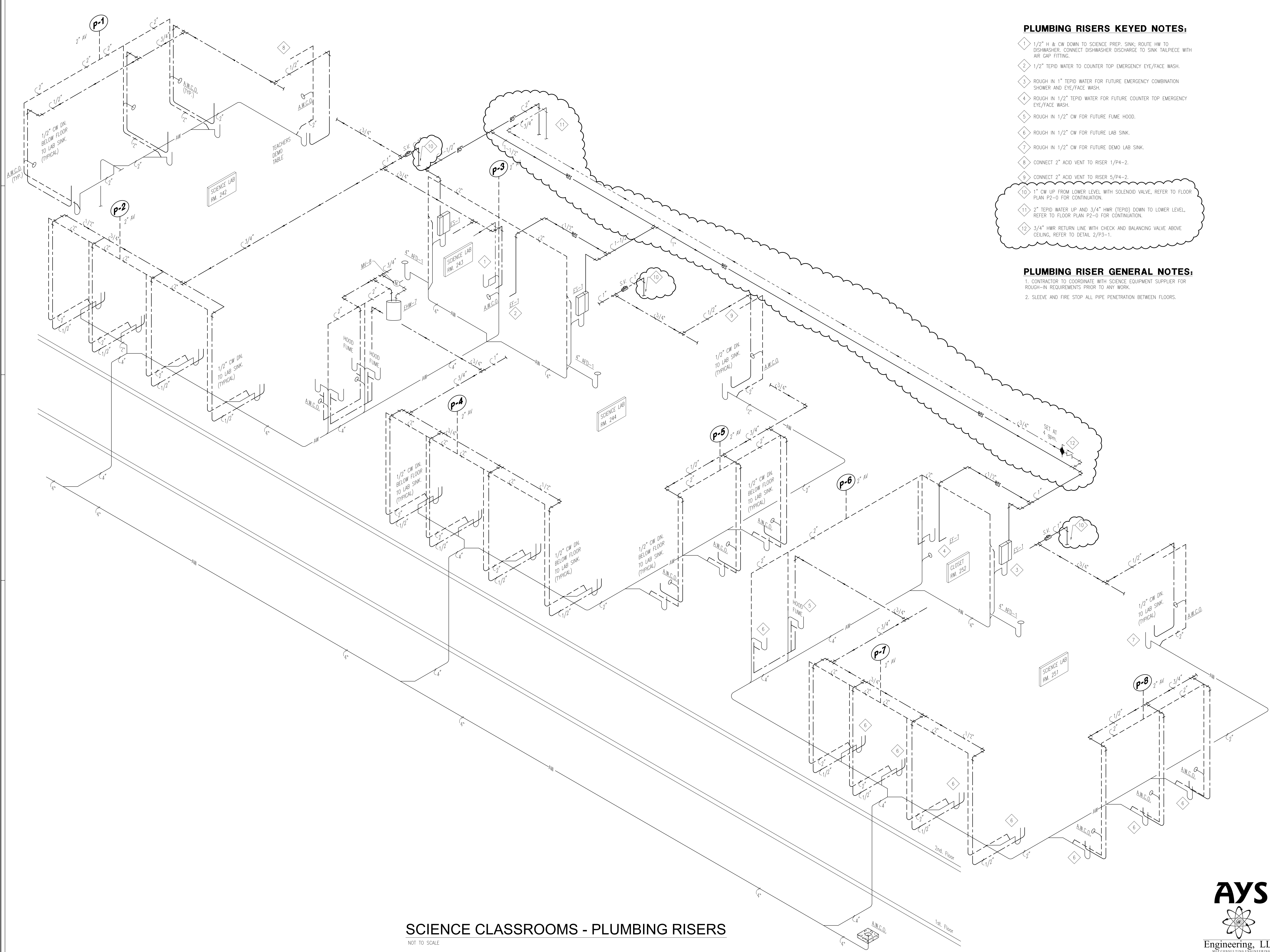
NOTE: By act of submitting a bid for the proposed contract, the bidder warrants that the bidder, and all subcontractors and material suppliers he intends to use have carefully and thoroughly reviewed the drawings and specifications and other construction documents and have found them complete and free from any ambiguities and sufficient for the purpose intended. The bidder further warrants that to the best of their or their subcontractor's and material supplier's knowledge all materials and products specified or indicated herein are acceptable for application codes and authorities.

1 ROOF PLAN - PLUMBING

595 Round Rock West Dr., Unit 103 • Round Rock • TX 78681
www.AYSeng.com • 512-961-6835

[illegible]



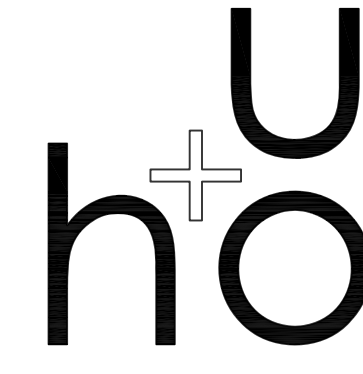


PLUMBING RISERS KEYED NOTES:

- 1 1/2" H & CW DOWN TO SCIENCE PREP. SINK; ROUTE HW TO DISHWASHER. CONNECT DISHWASHER DISCHARGE TO SINK TAILPIECE WITH AIR GAP FITTING.
- 2 1/2" TEPID WATER TO COUNTER TOP EMERGENCY EYE/FACE WASH.
- 3 ROUGH IN 1" TEPID WATER FOR FUTURE EMERGENCY COMBINATION SHOWER AND EYE/FACE WASH.
- 4 ROUGH IN 1/2" TEPID WATER FOR FUTURE COUNTER TOP EMERGENCY EYE/FACE WASH.
- 5 ROUGH IN 1/2" CW FOR FUTURE FUME HOOD.
- 6 ROUGH IN 1/2" CW FOR FUTURE LAB SINK.
- 7 ROUGH IN 1/2" CW FOR FUTURE DEMO LAB SINK.
- 8 CONNECT 2" ACID VENT TO RISER 1/P4-2.
- 9 CONNECT 2" ACID VENT TO RISER 5/P4-2.
- 10 1" CW UP FROM LOWER LEVEL WITH SOLENOID VALVE, REFER TO FLOOR PLAN P2-0 FOR CONTINUATION.
- 11 2" TEPID WATER UP AND 3/4" HW (TEPID) DOWN TO LOWER LEVEL, REFER TO FLOOR PLAN P2-0 FOR CONTINUATION.
- 12 3/4" HW RETURN LINE WITH CHECK AND BALANCING VALVE ABOVE CEILING, REFER TO DETAIL 2/P3-1.

PLUMBING RISER GENERAL NOTES:

- 1. CONTRACTOR TO COORDINATE WITH SCIENCE EQUIPMENT SUPPLIER FOR ROUGH-IN REQUIREMENTS PRIOR TO ANY WORK.
- 2. SLEEVE AND FIRE STOP ALL PIPE PENETRATION BETWEEN FLOORS.



hatch+ulland owen
architects

702 San Antonio Street
Austin, Texas 78701
T: 512.474.8548
F: 512.474.8643

www.huoarchitects.com

CIVIL ENGINEER:
TEXAS DESIGN INTERESTS
6001 W. WILLIAM CANNON
AUSTIN, TX 78749
512-301-3389

STRUCTURAL ENGINEER:
TEXAS DESIGN INTERESTS
6001 W. WILLIAM CANNON
AUSTIN, TX 78749
512-301-3389

MECHANICAL, ELECTRICAL &
PLUMBING ENGINEERS:
AYS ENGINEERING, LLC
595 Round Rock West Dr.
ROUND ROCK, TX 78681
512-961-6835

LANDSCAPE ARCHITECT:

HOUSTON
GATEWAY
ACADEMY
INC

BOWIE
CAMPUS

7310 BOWIE ST
HOUSTON, TX 77012

CITY OF HOUSTON
PROJECT # 09044674

NOTE: This document, the ideas and design incorporated herein are and shall remain the property of the architect. These documents are not to be used or altered in whole or in part for other than the original project and use without the obligation of any fee and without written permission from the architect.

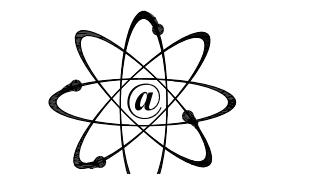
NOTE: By act of submitting a bid for the proposed project, the bidder warrants that the design and construction documents and specifications and other construction documents and that they have been carefully and thoroughly reviewed for compliance with the specifications and other construction documents and that they are not in conflict with any applicable laws and regulations. The bidder further warrants that the design and construction documents and specifications and other construction documents and that they have been carefully and thoroughly reviewed for compliance with the specifications and other construction documents and that they are not in conflict with any applicable laws and regulations.



PROJECT MGR:
DRAWN BY: AYS
CHKD. BY: AYS

ISSUE DATES:	
date	issue
06.5.09	Permit Set
08.21.09	COH REVIEW 1
10.30.09	COH REVIEW 2

AYS



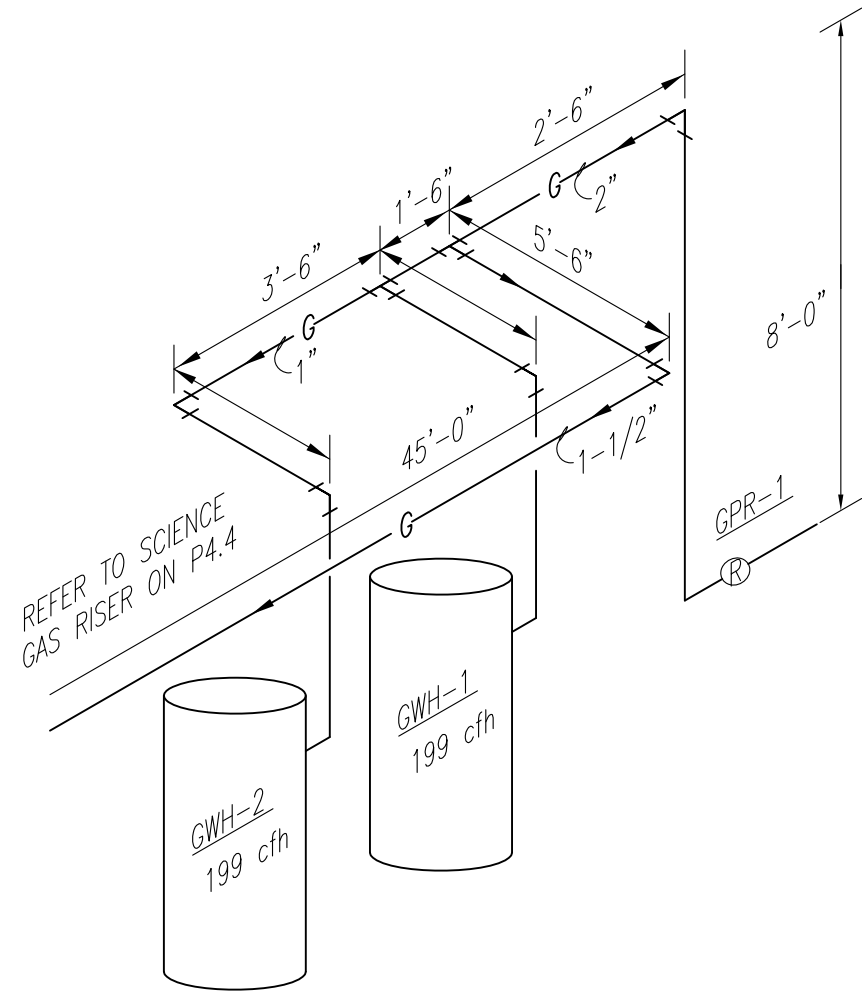
Engineering, LLC
CONSULTING ENGINEERING
595 Round Rock West Dr., Unit 103 • Round Rock, TX 78681
www.AYSEng.com • 512-961-6835

SCIENCE CLASSROOMS - PLUMBING RISERS

NOT TO SCALE

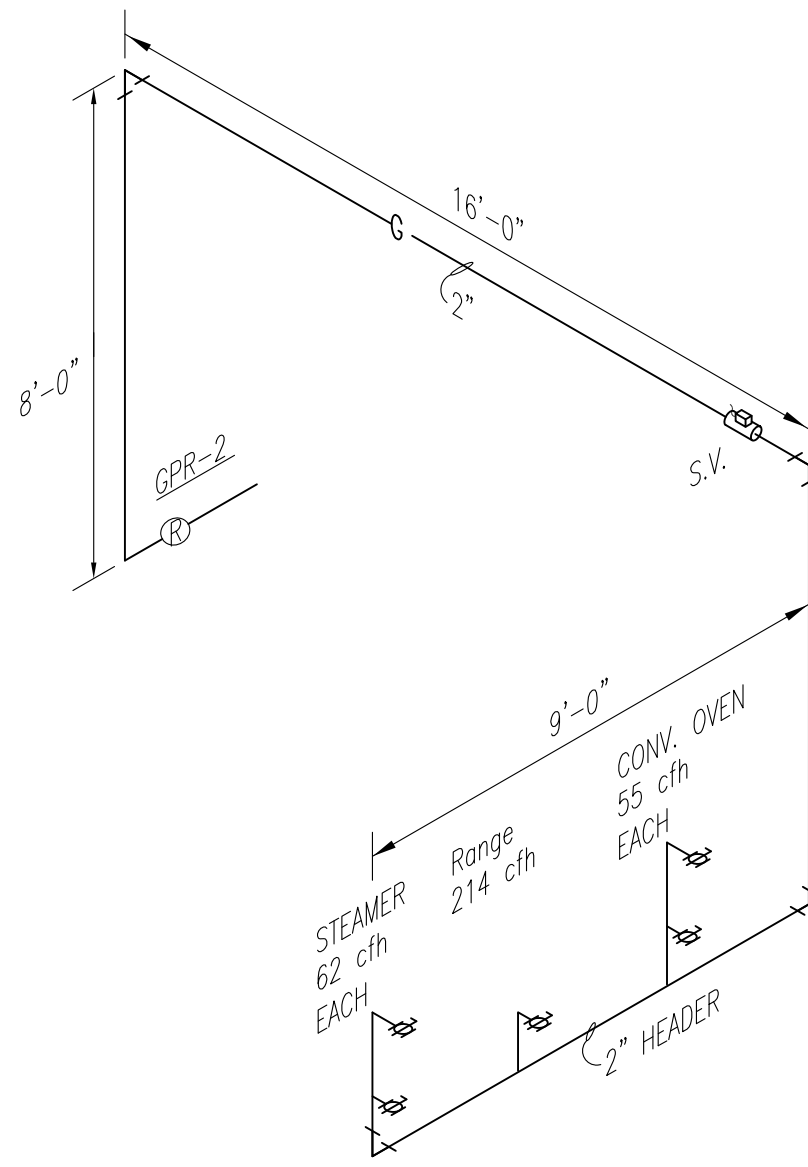
PLUMBING
RISERS

P4-3



WATER HEATER GAS RISER

NOT TO SCALE

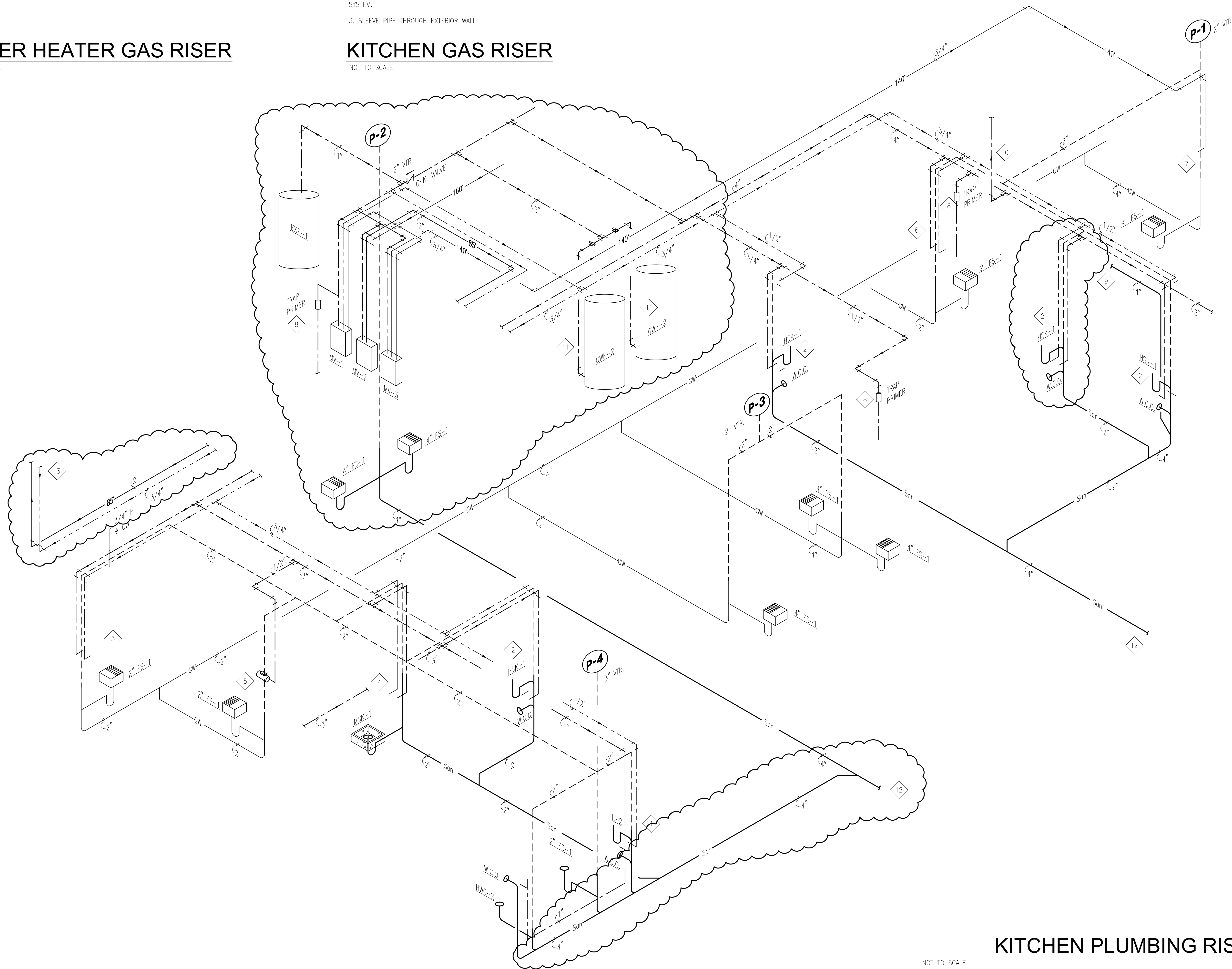


NOTES:

1. PROVIDE EQUIPMENT SHUT OFF VALVES WITH QUICK DISCONNECT.
2. PLUMBING CONTRACTOR PURCHASED AND INSTALLED GAS SOLENOID VALVE, CONTRACTOR TO COORDINATE WITH ELECTRICAL CONTRACTOR FOR ELECTRICAL CONNECTION, CONNECT TO HOOD EMERGENCY SHUT OFF SYSTEM.
3. SLEEVE PIPE THROUGH EXTERIOR WALL.

KITCHEN GAS RISER

NOT TO SCALE



KITCHEN PLUMBING RISER

NOT TO SCALE

PLUMBING PLAN KEYED NOTES:

- 1 1/2" HW & 1" CW DOWN IN PLUMBING CHASE TO PLUMBING FIXTURES WITH AREA SHUT OFF VALVE ABOVE CEILING.
- 1/2" H & CW DOWN TO HAND SINK.
- 3/4" H & CW DOWN TO (1) COMPARTMENT SINK, ROUTE WASTE INDIRECT TO FLOOR SINK. PROVIDE AIRGAP.
- 3/4" H & CW DOWN TO MOP SINK.
- 1/2" CW DOWN TO ICE MAKER WITH RPZ BACKFLOW PREVENTER, REFER TO DETAIL.
- 3/4" H & CW DOWN TO (3) COMPARTMENT SINK, ROUTE WASTE INDIRECT TO FLOOR SINK. PROVIDE AIRGAP.
- 3/4" HW (140") DOWN TO DISHWASHER, ROUTE DISHWASHER WASTE INDIRECT TO FLOOR SINK. PROVIDE AIR CAP.
- 1/2" CW TO TRAP PRIMER WITH SHUT OFF VALVE. PROVIDE DISTRIBUTION UNIT WHEN SERVING MULTIPLE DRAINS.
- 4" SANITARY SEWER RISER DOWN FROM GANG RESTROOM ON LEVEL ABOVE. REFER TO RISER 1/P4-2 FOR CONTINUATION.
- 2" CW UP TO RESTROOM ON LEVEL ABOVE. REFER TO RISER 1/P4-2 FOR CONTINUATION.
- 1-1/2" CW DOWN TO EACH GAS WATER HEATER.
- 4" SANITARY SEWER, REFER PLAN SHEET P2-0 FOR CONTINUATION.
- 2" TEPID WATER UP TO SECOND FLOOR AND 3/4" HW (TEPID) DOWN. REFER TO RISER SHEET P4-3 FOR CONTINUATION.